

GREENWICH MEANS

TIME

# What's New for 2021-22

in the Royal Borough of Greenwich, London

Greenwich - famous for the Meridian Line and Greenwich Mean Time (GMT)

## Explore: Maritime Greenwich World Heritage Site

National Maritime Museum, Cutty Sark, Royal Observatory, The Queen's House, Old Royal Naval College, Greenwich (Royal) Park, Greenwich Market

## Experience: Greenwich Peninsula

The O2 - for shows, dining, trampolining, bowling, cinema, football, Up at The O2, Icon Outlet at The O2 - Emirates Air Line cable car, Greenwich Peninsula Driving Range, CrazyPutt Adventure Golf, The Tide riverside park, NOW Gallery

## Discover: the whole incredible destination

Eltham Palace and Gardens

Woolwich Creative District - Woolwich Works opening 23<sup>rd</sup> September 2021

## Adventure: sightseeing and travel

By river with Uber Boat by Thames Clippers, Thames River Sightseeing and City Cruises  
London Underground, Docklands Light Railway (DLR) and Southeastern trains

Just 8 minutes from London Bridge

Find out more at [visitgreenwich.org.uk](https://www.visitgreenwich.org.uk)



## Unmissable events in Greenwich 2021

- **Festival of Hope**, a year-long programme of events that celebrate the creativity, heritage and diversity of London & the South East, The O2 and various locations across London, 16<sup>th</sup> November 2020 – 5<sup>th</sup> November 2021.
- **500 Years of Mischief and Mayhem in Greenwich**, a new temporary exhibition explores the history of the Old Royal Naval College with award-winning illustrator Nick Ellwood, Old Royal Naval College, May – October 2021.
- **The Queen's House Dining Domes**, enjoy a truly unforgettable dining experience in your own luxurious dining dome, The Queen's House, 7<sup>th</sup> May – 6<sup>th</sup> June 2021.
- **Faces of a Queen**, three surviving versions of the famous Armada Portrait are united on display for the first time in their 430-year history, The Queen's House, opening 17<sup>th</sup> May 2021.
- **Exposure: Lives at Sea**, a new exhibition examines what life is really like at sea today, through a seafarers' lens, National Maritime Museum, opening 17<sup>th</sup> May 2021.
- **Woburn Treasures**, a major collaboration showcasing significant works from the private art collection of The Duke and Duchess of Bedford, The Queen's House, opening 17<sup>th</sup> May 2021.
- **Insight Investment Astronomy Photographer of the Year**, an annual exhibition showcasing the world's greatest space photography, National Maritime Museum, 17<sup>th</sup> May – 8<sup>th</sup> August 2021.
- **Tudors to Windsors: British Royal Portraits**, a major exhibition exploring royal portraiture, National Maritime Museum, 28<sup>th</sup> May – 31<sup>st</sup> October 2021.
- **GAIA**, Luke Jerram's awe-inspiring art installation *Gaia* returns following a sold-out display, Painted Hall, Old Royal Naval College, 30<sup>th</sup> May – 1<sup>st</sup> July 2021.
- **Candlelight Open Air: Soundtracks of Ennio Morricone, Hans Zimmer & More**, this Candlelight series is heading outdoors for a safe and intimate series of classical concert, 9th June 2021, 7th, 14th, 18th 22nd, 28th July 2021 and 4th August 2021.
- **Greenwich Peninsula Summer Sessions**, a summertime music, film, and entertainment series, Greenwich Peninsula, 12<sup>th</sup> June – 19<sup>th</sup> September 2021.
- **Greenwich Book Festival**, returns for a fun filled festival, Old Royal Naval College, June 2021.

- **London in the Sky**, an experience like no other; a 22-seat Sky Table suspended 100ft in the air, enjoy fantastic food and drink accompanied by truly unique views of the capital's skyline, The O2, 1<sup>st</sup> July – 26<sup>th</sup> September 2021.
- **Royal Greenwich Festivals**, over 100 events spread across the whole of the borough, 3<sup>rd</sup> July – 18<sup>th</sup> September 2021.
- **The Luna Cinema**, returns with a line-up of classic and feel-good films to make your summer, Old Royal Naval College, 8<sup>th</sup> – 11<sup>th</sup> July 2021.
- **Cutty Sark Rig Climb Experience**, a new adventure at Cutty Sark! Climb from the Main Deck up the ship's rigging to experience the heights the crew would have had to scare on a daily basis when out at sea, Cutty Sark, July 2021.
- **The Vitality Big Half**, finishes at Cutty Sark and Festival site in Greenwich Park, 22<sup>nd</sup> August 2021.
- **Greenwich + Docklands International Festival**, London's leading festival of free outdoor theatre and performing arts, various locations across the Royal Borough of Greenwich, 27<sup>th</sup> August – 11<sup>th</sup> September 2021.
- **Totally Thames**, a celebration of diverse & accessible arts and culture with activities and events on and by the river, 1<sup>st</sup> – 30<sup>th</sup> September 2021.
- **Open House London**, the 30th edition of the much-loved city-wide celebration of architecture and landscape, various locations across London, 4<sup>th</sup> – 12<sup>th</sup> September 2021.
- **Woolwich Works**, the opening of London's newest creative district, 23<sup>rd</sup> September 2021.
- **Greenwich Comedy Festival**, a line-up of comedy marvels paired with street-food, craft beer and more at the iconic National Maritime Museum, 15<sup>th</sup> – 19<sup>th</sup> September 2021.
- **London Marathon**, starts in Greenwich Park, 3<sup>rd</sup> October 2021.
- **Woolwich Contemporary Print Fair**, London's only fair in contemporary printmaking, Royal Arsenal, 11<sup>th</sup> – 14<sup>th</sup> November 2021.
- **Christmas in Greenwich**, including The Queen's House Ice Rink, Greenwich Market and Panto at Greenwich Theatre, November – December 2021.

Find out more at [visitgreenwich.org.uk/events](https://www.visitgreenwich.org.uk/events)

\*Dates accurate as of 12/07/2021

## Royal Museums Greenwich

Visit Greenwich, The Institute for Creativity & Technology, Ravensbourne University London, Incubation +, 4 Appleby Yard, Soames Walk, Greenwich Peninsula, London SE10 0BJ

020 8103 3055 • [info@visitgreenwich.org.uk](mailto:info@visitgreenwich.org.uk) • [visitgreenwich.org.uk](https://www.visitgreenwich.org.uk) • [@visitgreenwich](https://www.instagram.com/visitgreenwich)

Royal Borough of Greenwich Destination Management Company • Company Number: 08543882

Royal Museums Greenwich is home to the Royal Observatory & the Peter Harrison Planetarium, Cutty Sark, National Maritime Museum and The Queen's House.

A UK top-10 visitor attraction, Royal Museums Greenwich is the place to discover sea and space exploration, British heritage, royal history, art and pioneering architecture.

The four landmark attractions are located within the UNESCO World Heritage Site of historic Royal Greenwich, one of London's most charming areas. All of the world class sites are within easy walking distance of each other.

2021 is an exciting year for Royal Museums Greenwich, with major exhibitions, new tours and a number of events taking place throughout the year.

**Behind the scenes at the National Maritime Museum** is a new tour at the Prince Philip Maritime Collections Centre. The Prince Philip Maritime Collection Centre is the location at which the majority of the National Maritime Museum's collection is stored and cared for when not on display to the public, just a 15-minute journey from Maritime Greenwich. The new tours of the collections centre give guests the opportunity to go behind the scenes and see how the organisation cares for the largest collection of maritime objects in the world; including surviving pieces from the Titanic and relics belonging to Admiral Nelson.



Visit Greenwich, The Institute for Creativity & Technology, Ravensbourne University London, Incubation +, 4 Appleby Yard,  
Soames Walk, Greenwich Peninsula, London SE10 0BJ

020 8103 3055 • [info@visitgreenwich.org.uk](mailto:info@visitgreenwich.org.uk) • [visitgreenwich.org.uk](http://visitgreenwich.org.uk) • [@visitgreenwich](https://www.instagram.com/visitgreenwich)  
Royal Borough of Greenwich Destination Management Company • Company Number: 08543882

## Royal Museums Greenwich: National Maritime Museum



The **National Maritime Museum**, in collaboration with the National Portrait Gallery, will host the major exhibition **Tudors to Windsors: British Royal Portraits**. The exhibition is opening in May through until 31<sup>st</sup> October and will display over 150 portraits of five royal dynasties, that shaped British history and feature some of the most important artists to have worked in Britain, from Sir Peter Lely and Sir Godfrey Kneller to Cecil Beaton and Annie Leibovitz.

**Exposure: Lives at Sea** is a brand-new photography exhibition opening in May at the National Maritime Museum, exploring what life is really like for those who work at sea today. Through a series of photographs taken by those working in the maritime industry, the exhibition shines a light on this often forgotten but integral work.

The hugely popular **Insight Investment Astronomy Photographer of the Year** returns in May to celebrate the very best in astrophotography from around the world at the National Maritime Museum.

## Royal Museums Greenwich: Cutty Sark



Cutty Sark is the world's sole-surviving tea clipper celebrated for her record-breaking passages around the globe. An audio guide at Cutty Sark has been added to enhance the visitor experience by bringing the story of the ship to life. The guide is available in English, German, French, Spanish, Italian, Mandarin, Japanese, Korean, Brazilian Portuguese and Russian. The audio guide is included in the cost of entry and takes about an hour to explore all levels of the ship.

Be one of the first groups to experience the **History of Tea Tour**, new to Cutty Sark. Find out about the international story behind the humble cup of tea, before it became Britain's favourite drink. Learn about the role Cutty Sark played in bringing tea to the UK and discover the influence of tea on British culture and society once it arrived. Finish the tour with a cup of tea, underneath the hull of the world's sole surviving tea clipper.

**Cutty Sark Rig Climb Experience** is a brand-new adventure at Cutty Sark opening from July 2021. Climb from Main Deck up the ship's rigging, to experience the extreme heights the ship's crew had to scale on a daily basis when out at sea. See beautiful views of the Thames and the London city skyline from the top of a true London icon before your zip line ascent to the ground below.

Visit Greenwich, The Institute for Creativity & Technology, Ravensbourne University London, Incubation +, 4 Appleby Yard, Soames Walk, Greenwich Peninsula, London SE10 0BJ

020 8103 3055 • [info@visitgreenwich.org.uk](mailto:info@visitgreenwich.org.uk) • [visitgreenwich.org.uk](https://www.visitgreenwich.org.uk) • @visitgreenwich

Royal Borough of Greenwich Destination Management Company • Company Number: 08543882

## Royal Museums Greenwich: Royal Observatory



Explore time and space at the **Royal Observatory** and stand on the Meridian line at the home of the Greenwich Mean Time (GMT). Discover the site's rich history, from its royal heritage to its awe-inspiring **Peter Harrison Planetarium**, all set within Greenwich's beautiful park.

Visit Greenwich, The Institute for Creativity & Technology, Ravensbourne University London, Incubation +, 4 Appleby Yard,  
Soames Walk, Greenwich Peninsula, London SE10 0BJ

020 8103 3055 • [info@visitgreenwich.org.uk](mailto:info@visitgreenwich.org.uk) • [visitgreenwich.org.uk](http://visitgreenwich.org.uk) • @visitgreenwich  
Royal Borough of Greenwich Destination Management Company • Company Number: 08543882

## Royal Museums Greenwich: The Queen's House



**Faces of a Queen** exhibits the three surviving versions of the iconic Armada Portrait of Elizabeth I in a free exhibition at The Queen's House in May through until September.

One of the most iconic images in British history, the Armada Portrait commemorates the most famous conflict in Elizabeth's reign, the Spanish Armada's failed attempt to invade England in 1588. Royal Museums Greenwich will showcase its own version of the Armada Portrait - which was saved for the nation in 2016 following a major public appeal with Art Fund and funding from the National Lottery.

The Queen's House, in partnership with Woburn Abbey, will see the opening of **Woburn Treasures** in May, which will showcase a variety of major art works from the private art collection of The Duke and Duchess of Bedford. The collection is considered to be one of the most important art collections still in private hands.

Highlights on display will include a full-length portrait of *Anne of Denmark* by Flemish artist Gheeraerts the Younger, a striking full length of *Lady Elizabeth Keppel* by Sir Joshua Reynolds and Canaletto's large-scale *Regatta on the Grand Canal*. Alongside these masterpieces, a selection of sculptures, ceramics and a silver-gilt toilette set spanning the 17th to 19th century will feature in the display.

**The Queen's House Dining Domes** are new in May and June. Eat out in style this Spring with an unforgettable dining experience in your own luxurious dining dome set against the spectacular Queen's House. Dine like royalty in front of this iconic 'house of delights', built especially for James I's wife Anne of Denmark and recently used as a filming location for the hit Netflix show *Bridgerton*.



## Old Royal Naval College

**Old Royal Naval College** is the centrepiece of Maritime Greenwich, a UNESCO World Heritage Site with a long and celebrated 500-year history. Today it is a diverse cultural destination and one of London's most popular venues and visitor attractions.



Explore the peaceful riverside location and Sir Christopher Wren's iconic architecture. The stunning buildings and extensive grounds tell 500 years of remarkable history that lists an incredible cast of monarchs and famous British figures, from Henry VIII and Elizabeth I to Vice-Admiral Lord Nelson.

Visitors can explore 'Britain's Sistine Chapel', Sir James Thornhill's breath taking Baroque **Painted Hall** and its neighbour, the glorious Chapel of St Peter and St Paul. It's easy to escape the crowds and discover 40,000 square feet of awe-inspiring painted walls and ceiling. Painted Hall tickets include entry to the **Chapel** and the **Skittle Alley** where visitors can try their hand at Victorian bowling. Multimedia guides (in English, French, Spanish, Italian, Chinese Mandarin, German and Japanese) and guided tours are also included. History buffs can explore the room where Admiral Lord Nelson's body lay in state and can see the recently discovered Tudor foundations of Greenwich Palace in the **King William Undercroft** which also houses a new café, shop and interpretation gallery.

**TV and Film Location Tours at the Old Royal Naval College** is the chance to experience a behind-the-scenes tour of 'the most popular filming location in the world' (Empire magazine). From a starring role as Buckingham Palace in *The Crown* to 19th century revolutionary Paris in *Les Misérables*, the Old Royal Naval College has provided the setting for some of the most memorable scenes in major film and TV productions. The tour takes in more than 60 years

Visit Greenwich, The Institute for Creativity & Technology, Ravensbourne University London, Incubation +, 4 Appleby Yard, Soames Walk, Greenwich Peninsula, London SE10 0BJ

020 8103 3055 • [info@visitgreenwich.org.uk](mailto:info@visitgreenwich.org.uk) • [visitgreenwich.org.uk](http://visitgreenwich.org.uk) • @visitgreenwich

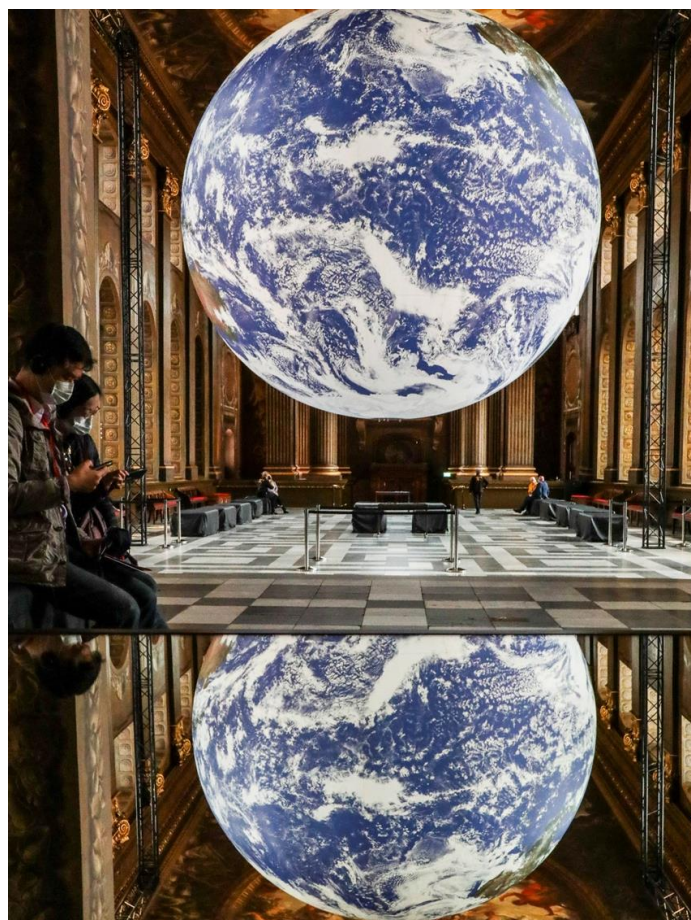
Royal Borough of Greenwich Destination Management Company • Company Number: 08543882

of filming, both on the award-winning riverside grounds and inside the Painted Hall, and gives an insider's view of how some of the biggest blockbusters come to life in Greenwich.

A new series of smartphone tours have been launched to help visitors explore the buildings and grounds of the Old Royal Naval College. Visitors can also download any of the 3 free self-guided tours of the Old Royal Naval College on the **Smartify** app. Tours include a Building Detectives tour, an architecture tour and a Greenwich Pensioners Tour.

The [Painted Hall 360 virtual tour](#) lets you marvel up-close at fire-breathing serpents, glistening jewels and bubble-blowing cherubs that are not clearly visible from the ground. You can pan around and zoom in to marvel at the details in ultra-high resolution and discover the stories behind the art. There is also a VR mode to use on smartphones. It's available in English and British Sign Language (with subtitles).

Following a sold-out display in Summer 2020, Luke Jerram's awe-inspiring art installation *Gaia* returns to the Old Royal Naval College in late May through until 1<sup>st</sup> July. The monumental internally-lit sculpture, measuring seven metres in diameter, was created using 120dpi NASA imagery and is an exact scale replica of our planet.



Visit Greenwich, The Institute for Creativity & Technology, Ravensbourne University London, Incubation +, 4 Appleby Yard,  
Soames Walk, Greenwich Peninsula, London SE10 0BJ  
020 8103 3055 • [info@visitgreenwich.org.uk](mailto:info@visitgreenwich.org.uk) • [visitgreenwich.org.uk](http://visitgreenwich.org.uk) • [@visitgreenwich](https://www.instagram.com/visitgreenwich)  
Royal Borough of Greenwich Destination Management Company • Company Number: 08543882

## On the Thames

Positioned on the Thames, Greenwich makes for a scenic and memorable visit to London and means you can connect to all parts of the Royal Borough via river transport.



### Uber Boat by Thames Clippers

**Uber Boat by Thames Clippers** announced a new sponsorship with Uber in 2020, tickets are now available through the Uber App meaning users can purchase tickets in advance to guarantee a seat and then use QR technology to board. The payment will be processed using the Uber account details. Following the launch of the new Venus Clipper in Spring 2020, Uber Boat by Thames Clippers have also announced an expansion of the service east to Barking Riverside.

**Park & Glide** allows you to park your car securely at The O2, then board an Uber Boat by Thames Clippers from North Greenwich Pier, an easy 5-minute walk away. Park & Glide for Leisure tickets include a River Roamer or Family River Roamer ticket.

### Thames River Sightseeing

**Thames River Sightseeing** is continuing to build their new name and branding with a launch of a new website. The Westminster to Greenwich Sightseeing River Cruise (Blue Route) operates sightseeing tours from Westminster to Greenwich Pier via St Katharine's all year around. Visitors can enjoy a sightseeing cruise from Westminster to Greenwich whilst listening to a multi-lingual commentary about London's historical sights on the way. All of the vessels are equipped with licensed bars and are specifically designed for this route.

### City Cruises

Following their acquisition by Hornblower UK Holdings Ltd, **City Cruises** have recently rebranded and relaunched their website. City Cruises continue to operate sightseeing and dining cruises to Greenwich.

Visit Greenwich, The Institute for Creativity & Technology, Ravensbourne University London, Incubation +, 4 Appleby Yard, Soames Walk, Greenwich Peninsula, London SE10 0BJ

020 8103 3055 • [info@visitgreenwich.org.uk](mailto:info@visitgreenwich.org.uk) • [visitgreenwich.org.uk](http://visitgreenwich.org.uk) • [@visitgreenwich](https://www.instagram.com/visitgreenwich)

Royal Borough of Greenwich Destination Management Company • Company Number: 08543882

## Greenwich Peninsula and The O2



**Greenwich Peninsula** is the fastest growing and most vibrant part of London. The Peninsula is currently home to **The O2**, **Up at The O2**, **Icon Outlet at The O2**, **Oxygen FreeJumping**, **Cineworld at The O2**, **Hollywood Bowl at The O2**, **Emirates Air Line cable car**, **The Tide riverside park**, **NOW Gallery**, **Ravensbourne University London**, dozens of bars and restaurants and many pieces of public art. Greenwich Peninsula is just 8 minutes away from the Maritime Greenwich World Heritage Site. Two incredible destinations side by side!

**The O2** is home to the world's most popular music, sport and entertainment events, and so much more. There's **Icon Outlet at The O2**, London's new premium outlet shopping destination. **Up at The O2** takes you on an exhilarating 90-minute climb over the roof of the world's most popular entertainment venue. See a different side of the city, by day, at twilight or sunset. **Cineworld at The O2**, London's biggest cinema with new 4DX and immersive technology. **indigo at The O2**, a live performance space. Trampolining at **Oxygen FreeJumping**, bowling at **Hollywood Bowl at The O2**, or choose from over 30 bars & restaurants open daily.

**Up at The O2** continues to run activations and special events in 2021, such as comedy, music and yoga on the roof. On the day upgrades include champagne, drinks and photos. At the summit, you'll be standing 52 metres above the legendary arena, with 360-degree views across this historic part of London beside the River Thames.

**Icon Outlet at The O2** is one of London's most exciting retail destinations. Open 7 days a week, you'll find over 60 superstar fashion and lifestyle brands with up to 70% off RRP every day including, adidas, Calvin Klein, Dune London, G-Star Raw, GAP, Levis, Nike, Ted Baker, Tommy Hilfiger and many more. New openings include BOSS, Tommy Hilfiger Kidswear, JOSEPH, Next Outlet and Haidilao Hotpot.

ABBA's Björn Ulvaeus brings **Mamma Mia! The Party** to The O2 on 1<sup>st</sup> October 2021. The unique entertainment experience puts guests at the heart of the action, with a spectacular show, four-course gourmet Mediterranean meal and an ABBA disco all-in-one.

**Cineworld at The O2** is London's largest cinema with 19 cinema screens and over 4,500 seats now offering 4DX, VIP, ScreenX and Superscreen options, experience the newest releases at one of the UK's most technologically advanced cinemas.

**The Tide**, London's first-ever elevated riverside linear park opened in Summer 2019 on Greenwich Peninsula. The Tide will eventually stretch 5km in length around the Peninsula. The landscaped trail offers public art installations by exciting artists including Damien Hirst, Allen Jones and Morag Myerscough to landscaped trails for running, walking and meditation points.

New and future openings at The O2 include **Tikky Town** (now open), **Gordon Ramsay Street Burger** (1<sup>st</sup> July), **TOCA Social** (29<sup>th</sup> July) and **Boom: Battle Bar** (2021).

## Eltham Palace and Gardens



Once a favoured medieval palace and then a Tudor royal residence, **Eltham Palace** was transformed into a striking Art Deco mansion by eccentric millionaires Stephen and Virginia Courtauld. Discover their stylish home which incorporates original medieval features into an otherwise ultra-modern 1930s design and explore their extravagant lifestyle as you discover the state of the art technology and unusual features of their residence. Explore 19 acres of beautiful historic gardens which were a gold winner at London in Bloom Awards 2017. Discover the intriguing mix of medieval features woven into the landscape. Take time to wander around the Rock Garden with its series of pools and cascades running down to the moat. Cross the moat on London's oldest working bridge and smell the roses in the sunken rose garden.

Take an interactive tour of Eltham Palace and Gardens with the free multimedia guide. Play a touch-screen game or hear about 1930s technology and the medieval feasts hosted at Eltham. Choose from an adult or family tour plus BSL and audio-described versions are available.

## Visit Woolwich: a new Cultural Destination

Woolwich is an amazing mix of cultures with lots of history and great places to see and visit. There are distinctive and delicious places to eat and drink and some beautiful walks and rambles to be had over commons and through woodland, as well as beside the River Thames.

A new creative district is emerging at the Royal Arsenal and the town centre is lively and bustling. Transport to and from Woolwich is easy and frequent with great links with the centre of London via Docklands Light Railway (DLR), train, bus and Uber Boat by Thames Clippers. When the Elizabeth Line opens, Woolwich will be directly connected to the heart of Central London, with journey times of just 19 minutes!

Discover Woolwich's heritage, enjoy festival events, browse the markets, explore the Royal Arsenal and sample foods from around the world.

## Woolwich Works



Woolwich is embarking on a new chapter as the capital's next landmark cultural destination. An exciting new cultural district Woolwich Works will open on the Royal Arsenal on 23<sup>rd</sup> September 2021, a series of landmark historic buildings, to create a 15,000sqm complex of theatre space, rehearsal and performance studios, event venues and places to eat and drink.

Visit Greenwich, The Institute for Creativity & Technology, Ravensbourne University London, Incubation +, 4 Appleby Yard, Soames Walk, Greenwich Peninsula, London SE10 0BJ

020 8103 3055 • [info@visitgreenwich.org.uk](mailto:info@visitgreenwich.org.uk) • [visitgreenwich.org.uk](http://visitgreenwich.org.uk) • @visitgreenwich  
Royal Borough of Greenwich Destination Management Company • Company Number: 08543882

The site will include a large, flexible venue with excellent acoustics that can host an audience of 1200 seated or 1800 standing, an open-air courtyard for performances and events, rehearsal studios, offices for resident artistic companies, spaces for dinners, weddings and events, and public facilities including a café and bar beside the River Thames.

The world-renowned theatre company, **Punchdrunk**, is just one of the world class residents poised to make Woolwich Works its home. They will join a number of local, national and internationally acclaimed artists, including Europe's first majority black and minority ethnic orchestra, **Chineke! Orchestra**, the **National Youth Jazz Orchestra**, **Luca Silvestrini's Protein** and the **Woolwich Contemporary Print Fair**.

Woolwich Works have announced the first wave of their new [events programme](#) ahead of their September opening. Offering a diverse line-up of exciting events, Woolwich Works will host a variety of major new music, dance, theatre and art productions alongside workshops and classes for the community with artists ranging from Ashley Henry, Afrikan Boy, Sara Pascoe and Reg D Hunter.

Whether it's household names or up-and-coming talent, Woolwich Works endeavour to bring together some of the most exciting performers London has to offer and champion new, diverse and local talent.

Upcoming events include **Tommy Blaize, Reginald D. Hunter & National Youth Jazz Orchestra play Gil Scott-Heron** (1<sup>st</sup> October), **Soothsayers** (9<sup>th</sup> October) and **Live at the Works with Sara Pascoe** (20<sup>th</sup> November). Tickets go on sale on 2<sup>nd</sup> July 2021.





Cultural happenings in Woolwich include **En Route** a new outdoor promenade experience from 27<sup>th</sup> July through until 1<sup>st</sup> August. The **Greenwich+Docklands International Festival** that arrives on 27<sup>th</sup> August through until 11<sup>th</sup> September with inspiring and extraordinary free outdoor entertainment. **Open House London** throw open the doors of the area's most architecturally interesting buildings on 4<sup>th</sup> - 12<sup>th</sup> September, celebrating its 30<sup>th</sup> anniversary. The **Woolwich Carnival** celebrates a sparkling end to the summer in September before the **London Marathon**, which comes pounding down the streets in October 2021. The **Woolwich Contemporary Print Fair** is the UK's largest and London's only fair, taking place on 11<sup>th</sup> - 14<sup>th</sup> November. The year closes with a spectacular **Winter Warmer** in December.



## Festivals in Greenwich



Greenwich is an eventful destination with a wide range of arts and music festivals taking place throughout the year. **Festival of Hope** is a year-long programme of events that celebrate the creativity, heritage and diversity of London & the South East. Activities are running until November 2021 in Greenwich and various locations across London. Key events include a Children's Art Competition (16<sup>th</sup> November – 31<sup>st</sup> March 2021) and Exhibition (1<sup>st</sup> – 27<sup>th</sup> June 2021), Rainbow Wishing Trees (21<sup>st</sup> – 27<sup>th</sup> June 2021), Music Escapes Festival (Summer 2021), Locate Larry (26<sup>th</sup> July – 20<sup>th</sup> August 2021), Giant Monsters Invade London (25<sup>th</sup> – 31<sup>st</sup> October 2021) and a Photography competition (November 2021). The **Royal Greenwich Festivals** get under way on 3<sup>rd</sup> July through until 18<sup>th</sup> September. **The Vitality Big Half** gets us running on 22<sup>nd</sup> August with a half marathon from Tower Bridge to Greenwich followed by a celebration of London's diverse culture, food and music in Greenwich Park. The Summer is packed full with **Greenwich+Docklands International Festival**, London's biggest outdoor free festival (27<sup>th</sup> August – 11<sup>th</sup> September), **Greenwich Comedy Festival** (15<sup>th</sup> – 19<sup>th</sup> September) and **Greenwich Book Festival** (June). Events are on and around the river with **Summer Sessions** launching on 12<sup>th</sup> June through until 19<sup>th</sup> September, **Totally Thames** launches a month of activities and events on and by the river on 1<sup>st</sup> – 30<sup>th</sup> September and the **London Marathon** races through the Royal Borough of Greenwich on 3<sup>rd</sup> October. Greenwich has a great mix of festivals and events including **The Luna Cinema** (8<sup>th</sup> – 11<sup>th</sup> July) and **Vegan Oktoberfest** (October) at Greenwich Market. Visit **The Queen's House Ice Rink** (18<sup>th</sup> November 2021 – 9<sup>th</sup>

Visit Greenwich, The Institute for Creativity & Technology, Ravensbourne University London, Incubation +, 4 Appleby Yard, Soames Walk, Greenwich Peninsula, London SE10 0BJ

020 8103 3055 • [info@visitgreenwich.org.uk](mailto:info@visitgreenwich.org.uk) • [visitgreenwich.org.uk](http://visitgreenwich.org.uk) • @visitgreenwich

Royal Borough of Greenwich Destination Management Company • Company Number: 08543882

January 2022), **Panto at Greenwich Theatre** (November 2021 – January 2022), **Greenwich Market** and see our **Christmas Lights Switch On** for a wintery Greenwich experience.

## **New Openings and Updates**

### **England Originals**

England's Historic Cities, which includes **Greenwich**, has secured further investment from the Discover England Fund for their innovative **England Originals** project. The project was created in 2018 to encourage more US visitors to explore regional England and has already benefited from over £1m of investment from the fund. This new investment will be used to promote the cities to domestic audiences in 2021 to help with recovery from the Covid-19 pandemic.

England Originals brings together 16 of England's historic destinations under one brand umbrella and promotes them to younger audiences. It does this by combining story-telling and augmented reality with a visitor offer that emphasises fun activities and new experiences set against a backdrop of some of England's stunning heritage locations.

The new investment will be used to enhance and expand the visitor offer, produce new inspirational content and deliver a consumer marketing campaign in early 2021. It will also support ongoing collaboration with US tour operators and travel agents for when travel restrictions are lifted and international visitors are able to return.

## Radisson RED London Greenwich The O2



The **Radisson RED London Greenwich The O2** is new to open in 2021. Feel the buzz in London's hip borough of Greenwich, complete with dreamy riverside views, excellent attractions, and just minutes from central London. Located nearby The O2, the world's most popular music, sport and entertainment venue, the first Radisson RED hotel in London is set to shake up the neighbourhood.

Check in to bold and fun hotel rooms that offer all the good stuff—big, plush beds, 24-room service, rain effect showers—designed for a fun stay. Tuck into creative food offerings with a local focus at the all-day restaurant, catch up for drinks at the street-level bar, and explore the fantastic destination.

Opening 21<sup>st</sup> July 2021.

## TOCA Social

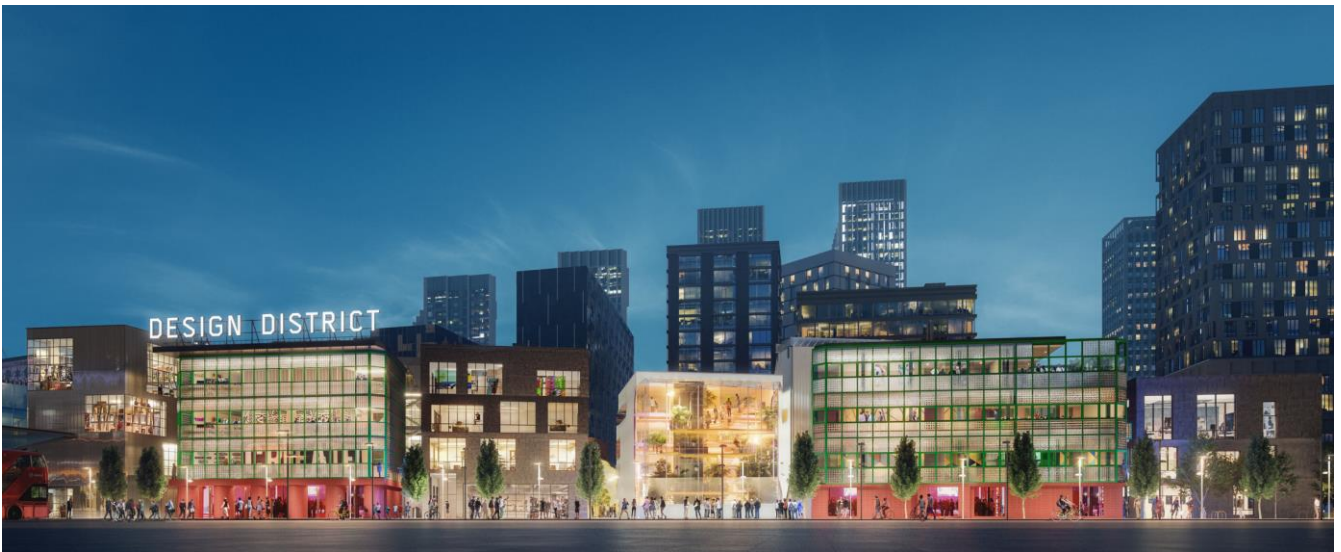


TOCA Social is the world's first interactive football and dining experience, combining immersive gaming and world class food and drink.

Immersive gaming, delicious food and five-star cocktails, it's a football match made in heaven. It's a night-out with friends like no other and day-out with the family they'll never forget, so enjoy it, drink it in!

Opening 29<sup>th</sup> July 2021.

## Design District



The **Design District** is a new collection of 16 buildings designed by eight architects, set in the heart of Greenwich Peninsula. From Summer 2021 it will offer a permanent and purpose-designed work space for the creative industries.

Opening Summer 2021.

## LHG (London Hotel Group)

LHG (London Hotel Group) has won planning permission to convert and extend the former Greenwich Magistrates' Court and two empty educational buildings into a 293-bed boutique hotel.

Located within the Ashburnham Triangle Conservation Area in Greenwich, London, project designed by Squire & Partners will retain the Grade II Listed Magistrates' Court and the two redundant school buildings, as well as reintroducing public access to the Court building and creating new green space and local amenities.

The ground floor of the former Magistrates' Court and one of the school buildings will contain front of house hotel services such as bar, restaurant and café, giving the buildings a new life and creating new amenities for both hotel guests and local residents. The new scheme will also include a range of public, semi-public and private green spaces, including a new public square, built around an existing mature tree, and animated by a restaurant or cafe. Further facilities include a gym, pool, conference centres and generous parking spaces.

Expected to open in 2022.



## The Elizabeth Line



The **Elizabeth line** is due to open in the first half of 2022. The new Crossrail service will reduce the journey time between Woolwich and the West End. The route will eventually pass through 41 stations from Reading and Heathrow in the west, through new twin-bore 21 km tunnels to Shenfield and Abbey Wood in the east.

Expected to open in 2022.

**For press and media queries and image requests, please contact**

[media@visitgreenwich.org.uk](mailto:media@visitgreenwich.org.uk)

**For advice on planning and booking your next group visit to Greenwich, please contact**

[trade@visitgreenwich.org.uk](mailto:trade@visitgreenwich.org.uk)

**\*\*Due to Covid-19, many attractions, restaurants, pubs, theatres, public spaces and other venues have temporarily closed or have changed their practices to maintain public and staff safety. Planned events may well have been cancelled. We advise that you check carefully before you travel. For the latest Covid-19 travel guidance please refer to the official UK Government website [gov.uk/coronavirus](https://www.gov.uk/coronavirus).**

Visit Greenwich, The Institute for Creativity & Technology, Ravensbourne University London, Incubation +, 4 Appleby Yard,  
Soames Walk, Greenwich Peninsula, London SE10 0BJ

020 8103 3055 • [info@visitgreenwich.org.uk](mailto:info@visitgreenwich.org.uk) • [visitgreenwich.org.uk](https://www.visitgreenwich.org.uk) • [@visitgreenwich](https://www.instagram.com/visitgreenwich)  
Royal Borough of Greenwich Destination Management Company • Company Number: 08543882